

Report of	Meeting	Date
Director (Communities)	Overview and Scrutiny Committee	Thursday, 25 January 2024

Youth Diversionary and Out-Reach Services

Is this report confidential?	No
------------------------------	----

Is this decision key?	No
-----------------------	----

Purpose of the Report

- To provide an overview to the committee of the youth diversionary and outreach support services across the borough.

Recommendations

- To note the report.

Reasons for recommendations

- There is a duty on local authorities to secure sufficient youth services within their area. The duty requires ring fenced funding to deliver or fund local youth partnerships. As a two-tier authority, it should be recognised that this duty would fall upon Lancashire County Council. Therefore, the report provides an overview of the provisions known to the Council accessible in the borough.

Other options considered and rejected

- None considered.

Corporate priorities

- The report relates to the following corporate priorities:

Housing where residents can live well	A green and sustainable borough
An enterprising economy with vibrant local centres in urban and rural areas	Healthy, safe and engaged communities

Background to the report

6. The positive role that LA's play in the facilitation of youth diversionary and outreach services is essential in supporting young people's wellbeing. Chorley Council recognises the value of the support service and therefore provides additional funding and works closely with partner agencies, in addition to the provisions delivered by LCC.

Anti-Social Behaviour

7. Anti-social behaviour (ASB) features as one of the primary concerns for Chorley as detailed in the most recent Strategic Assessment and the Lancashire Talking Survey. Therefore, ASB is one of the authorities' key priorities as detailed in the Community Safety Partnership Action Plan 2022-2025.
8. In accordance with The Strategic Assessment Local Profile the wards with the highest volume of ASB reported are: Chorley South East, Chorley South West and Chorley North East.
9. It is recognised that diversionary and outreach support plays a key role in ASB reduction.

Inspire Youth Zone Detached Outreach Programme

10. Chorley Council has therefore funded Inspire Youth Zone Detached and Outreach programme which focuses on Inspire participation levels in non-central Chorley locations specifically areas of high ASB amongst young people.
11. The targeted areas are based on referrals and intelligence from local partners and councillors. The Detached Youth Work & Outreach Team adopted a dual approach; engaging young people in non-central locations to understand why membership and attendance in some areas of the borough is low; and to engage their work with vulnerable young people in areas of deprivation, focusing on understanding their needs.
12. The purpose of the programme has been adapted using findings of previous programmes. A programme of 12 months of detached youth work with vulnerable young people in areas of high ASB or need is delivered, gathering information around contextualised safeguarding issues which will help keep young people safe when out in their community as well as encouraging young people to actively participate in Inspire.
13. The findings aid responses to and feedback to provide to local partners, councillors and residents. Findings can highlight barriers experienced by young people in non-central areas of Chorley, including travel time and availability.
14. Monthly reports are provided to the council, highlighting the impact of the detached and outreach activity, observations whilst delivering detached youth work and recommendations for future interventions.
15. Most recent review provided for the period of April-December 2023 can be summarised as follows:

Location	# visits per month	# YP per month	Location	# visits per month	# YP per month
Astley Village	1	34	Duke St	3	56
Buckshaw	6	86	Devonshire Rec	4	52

Buttermere	18	447	Euxton	7	93
Clayton Brook	14	677	Harpers Lane	5	21
Coppull	17	653	Town Centre	17	274
Tatton	3	18	Whittle le woods	1	26
Adlington	23	519	Total	119	2956

16. Inspire have introduced the use of 'The Scran Van' which is used to engage young people by offering free food during outreach sessions where possible on some winter evenings as the weather and dark nights do not as easily allow for physical activity engagement.
17. When the weather and lighting permits, young people encountered at locations are encouraged to participate in physical activity or wellbeing workshops, similar to those provided at Inspire, whilst the youth workers subtly assess if the youths are in need of any additional support.
18. All engagements with young people are used as an opportunity to encourage them to attend Inspire, with many taking up the offer of free memberships.
19. Alongside the detached youth work programme, Inspire also attends schools to provide assemblies, promoting the facilities and opportunities at Inspire, particularly in areas where membership uptake is low.
20. Observations and causes for concern are reported monthly, with urgent matters such as safeguarding concerns, reported through the appropriate channels immediately.

Children and Family Wellbeing Detached Service

21. Lancashire County Council deliver what is called the 'Youth Zone' - [Youth Zone - Lancashire County Council](#) which aims to improve the social, environmental and economic impact to achieve better outcomes for children, young people and their families.
22. To provide information and signpost children, young people, parents and families to support that is available through universal services and community based organisations. To provide direct support where needed to help children, young people, parents and families improve their outcomes.
23. The services are available through online referrals and across various locations-- for Chorley The Zone location is Lord Steet PR6 0RF.
24. Outreach work is delivered twice a week within the Chorley Borough on Wednesday at Adlington and on a Friday at Coppull, between 7-9pm. The outreach is a bus that is driven to the main play areas in each location and staff engage with young people within the localities.

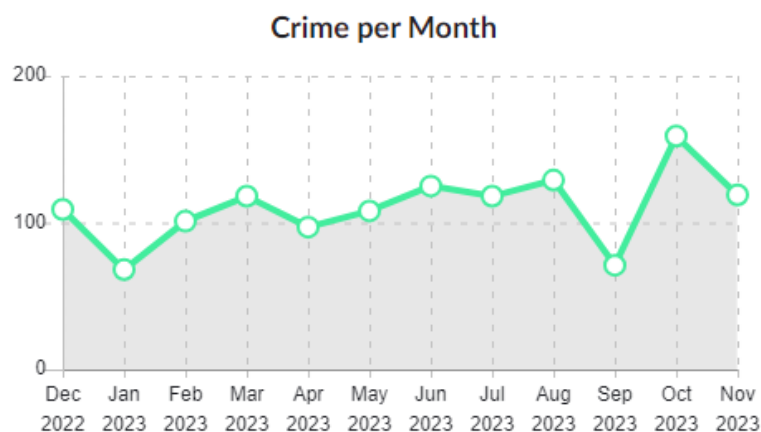
Chorley Council Public Protection Team

25. The Public Protection Team as part of their efforts in tackling ASB undertook an informal consultation exercise to engage with young people. Specifically, those engaging in ASB and considered hard to engage. In summary the findings showed

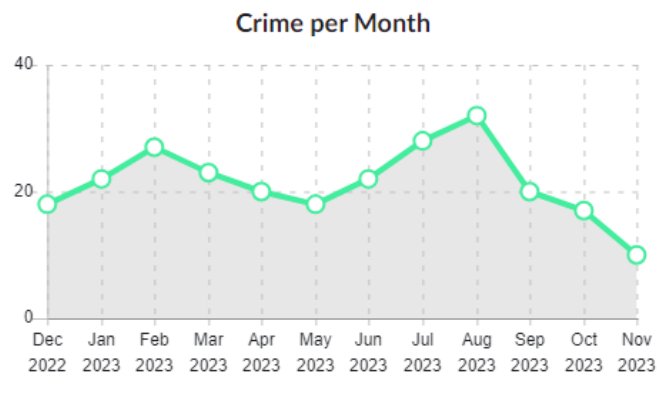
that those over the age of 13 were aware of the provisions such as Inspire Youth Zone, however that they were too “cool” to attend and saw it just for little kids.

26. Therefore, it was identified that there was a lack of diversionary facilities that appealed to some of the teenage cohort and that this group were hard to reach and engage with. The team used the information to make funding applications to the Police Crime Commissioner and LANPAC to deliver alternative diversionary activities during school half terms in ASB hot spot areas.
27. The applications were successful, which allowed the delivery of short-term diversionary activities, the projects are known as Operation Cauldron and Operation Sunshine. Operation Sunshine offered three sessions a week throughout the six week summer break and through the half terms. The sessions consisted of different sporting activities, arts, crafts, and baking sessions.
28. Outreach work was delivered by members of the public protection team, with support from partners including the local policing neighbourhood team, Chorley communities’ team and Preston North End Community Trust.
29. The sessions were advertised by engaging with local schools, social media, word of mouth and patrolling the hot spot areas to steer the young people to the provision. The sessions were highly successful engaging over 300 young people. It was noted, where you would normally see a spike in ASB in this period, a significant drop was evident, highlighting its success.
30. The sessions were delivered at 3 locations, Devonshire Rec, West Way Sports Hub Euxton and Clayton Green Sports Centre. Below shows how impactful the sessions were on the reduction of ASB during this period at two of these locations, where it is normally common to see a spike due to the school half term:

Chorley Town Centre – Devonshire Rec:



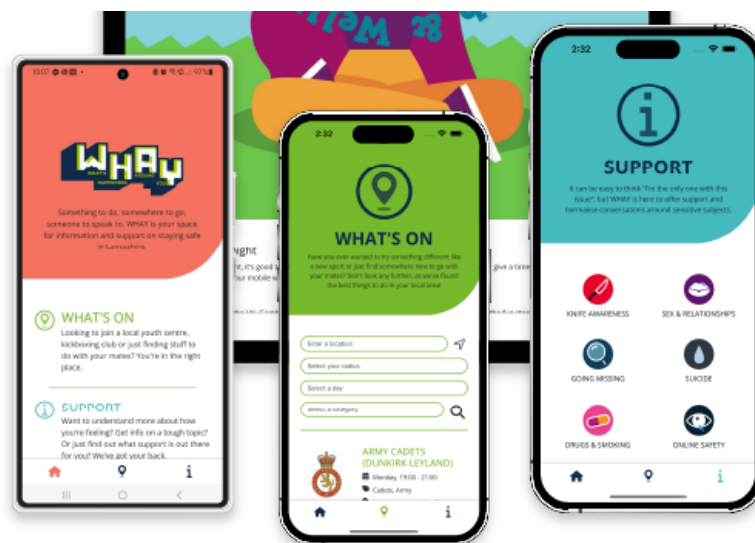
West Way Euxton:



31. Furthermore, the fantastic attendance was recognised by PNE Community trust. Due to the project's success, PNE have now committed to take over these sessions and fund it on a permanent basis at the Clayton Green Sports Centre.
32. Operation Cauldron followed in October; this offered the same provisions and engagement was even higher per session than it was in the summer. With an average of 40 young people attending each session.
33. The provision in its current format is unsustainable, as this is delivered through external funding that cannot be relied upon longer term and it has also been delivered in house which has had a huge staffing impact. However, alongside the PNE project, a further application has been made to Lanpac to be able further diversionary outreach work in the February half term.

Lancashire Violence Reduction Network (LVRN)

34. Lancashire Violence Reduction Network (LVRN) and University of Central Lancashire (UCLan) have created a mobile app named 'WHAY' What's Happening Around You.



35. The 'Whats On' section provides a search function listing all the available activities in a given area. Although not targeted or funded outreach support, the app is a great tool to access all in one place activities which would divert from ASB across. The

app also aims to provide vital support for people who are turning to online resources for help and give them a reliable, safe source of information that can be tricky to find on the internet. It offers free resources for young people on a range of matters including mental health, knife crime and sex & relationships.

Preston North End

36. Preston North End Community and Education Trust's delivers a Premier League Kicks programme. The Premier League's flagship initiative, which is funded nationally by the Premier League and Sport England, sees fully qualified coaches from Preston North End Community and Education Trust deliver sessions to deprived areas in Preston.
37. The sessions provide young people with the opportunity to take part in weekly free of cost football sessions, using football as a form of escapism from daily challenges in a safe and welcoming environment.
38. The initiative has a long history of using the power of football to help hard-to-reach youngsters in some of the most high-need areas in Preston, seeing the Trust work in conjunction with a variety of schemes that target specific areas where the project is needed most.
39. Below shows the current timetable with 2 areas in Chorley, however this is subject to change at any time due to uptake and demand. Therefore, should be checked before attendance.

Day and Time	Venue	Session	Age Group
Monday 5pm until 6pm	Moor Nook MUGA Burholme Road, PR2 6HN	Kicks	Eight to 18-year-olds
Tuesday 4.30pm until 5.30pm	Preston College PR2 8UR	Kicks	16 to 19-year-olds (Preston College students only)
Tuesday 5pm until 6pm	Moss Side MUGA Leyland, PR26 7SN	Kicks	Eight to 18-year-olds
Tuesday 6.30pm until 8.30pm	Tanterton Centre Kidsgrove, Tanterton, Preston, PR2 7BX	Youth Club	Ten to 13-year-olds
Wednesday 5pm until 6pm	Clayton Green leisure centre PR6 7TL	Kicks	Eight to 18-year-olds
Thursday 11.45am until 1.25pm	Preston College PR2 8UR	Kicks	16 to 19-year-olds (Preston College students only)
Thursday 1.25pm until 4.25pm	Cardinal Newman College PR1 4HD	Kicks	16 to 19-year-olds (PAN-disability Cardinal Newman students only)
Thursday 5pm until 6pm	Smith's Recreation Ground Preston, PR1 3QU	Kicks	Eight to 18-year-olds
Thursday 5.30pm until 7pm	PNE Community Offices Alan Kelly Stand, Deepdale, PR16RU	Deepdale Youth Club	Eleven to 17-year-olds
Friday 12pm until 1pm	Eden Boys High School Preston, PR1 4BD	Kicks	13 to 15-year-olds (Eden Boys pupils only)
Friday 5pm until 6pm	Callon All Weather Pitch PR1 4RH	Kicks	Eight to 18-year-olds
Friday 6pm until 8pm	Bamber Bridge Sports Hub PR5 6YJ	Kicks	Ten to 16-year-olds
Friday 6pm until 9pm	Chorley Inspire Youth Zone PR7 1BS	Inspire Youth Zone	Eleven to 18-year-olds

Climate change and air quality

40. The work noted in this report does not have an impact on the Councils Carbon emissions and the wider Climate Emergency and sustainability targets of the Council.

Equality and diversity

41. Equality implications have been considered and assessments relevant to the projects delivered are completed as required which reflect upon potential impacts on individuals based on the proceed characteristics such as age, sex, disability etc.

Risk

42. Reputational – The statutory duty falls upon LCC, Chorley Council have provided funding to provide youth diversion following concerns about lack of investment in youth provision by LCC.
43. Harm – without suitable provisions in the borough this could increase the risk of harm to its residents.

Comments of the Statutory Finance Officer

44. There are no direct financial implications of this report..

Comments of the Monitoring Officer

45. There are no direct legal implications arising from the report – essentially it is for information and noting.

Report Author:	Email:	Telephone:	Date:
Laura-Jean Taylor (Head of Public Protection)	Laura-Jean.Taylor@chorley.gov.uk		12.01.2024